



Problem Gambling Library

Newsletter
May 2009

Australia's Productivity Commission Inquiry into Australia's gambling industries

The Inquiry has received an large number of submissions from the industry, social agencies and concerned individuals which are definitely worth viewing, as the decisions made by them will have an impact on New Zealand in the foreseeable future. The last inquiry was carried out 10 years ago.

New Zealand has a lot in common with Australia, with increased accessibility to gambling activities over the last decade, and having to contend with our government's addiction to gambling revenue.

The inquiry will provide an update on developments since the Commission's 1999 report, and can consider a wide range of issues, including:

- the nature and definition of gambling and the range of activities incorporated within this definition
- the participation profile of gambling, including problem gamblers and those at risk of problem gambling
- the economic impacts of the gambling industries, including industry size, growth, employment, organisation and interrelationships with other industries, such as tourism, leisure, other entertainment and retailing
- the social impacts of the gambling industries, the incidence of gambling abuse and the cost and nature of welfare support services necessary to address it
- the contribution of gambling revenue on community development activity and employment
- the effects of the regulatory structures - including licensing arrangements, entry and advertising restrictions, application of the mutuality principle and differing taxation arrangements - governing the gambling industries, including the implications of differing approaches for industry development and consumers
- the implications of new technologies (such as the Internet), including the effect on traditional government controls on the gambling industries
- the impact of gambling on Commonwealth, State and Territory budgets
- the impact that the introduction of harm minimisation measures at gambling venues has had on the prevalence of problem gambling and on those at risk
- evaluate the effectiveness and success of these harm minimisation measures used by the State and Territory Governments.

SOME EXAMPLES OF SOCIAL AGENCY SUBMISSIONS:

<http://www.pc.gov.au/projects/inquiry/gambling-2009/submissions>

These are of particular interest:

www.pc.gov.au/_data/assets/pdf_file/0009/87867/sub203.pdf

http://www.pc.gov.au/_data/assets/pdf_file/0007/87469/sub128.pdf

http://www.pc.gov.au/_data/assets/pdf_file/0007/87226/sub075.pdf

**Please come and visit the library at PGFNZ Auckland Office
Level 1, 128 Khyber Pass Road, Grafton, Auckland.
Hours are 8.30am - 5.00pm during the week**



Articles/ Books & DVDs added to library in May 2009

COMMUNITY RESOURCES

Oregon Department of Human Services. Addictions and Mental Health Division. *Oregon problem gambling community resource guide 2009*. 2009 Salem: ODHS. <http://www.oregon.gov/DHS/addiction/gambling/2009/opgaw2009guide.pdf>

GAMBLING

J Borrell. *Understanding problem gambling*. 2008. Germany: VDM Verlag.

INTERNET GAMBLING

M Griffith, J Parker & Richard Wood. Online poker gambling in university students: Further findings from an online survey. *International Journal of Mental Health & Addiction* 2009 Online ed.

MAORI

Ahuriri-Driscoll, A., Baker, V., Hepi, M., Hudson, M., Mika, C., & Tiakiwai, S.J. *The future of rongoa Maori. Wellbeing and sustainability*. A report for Te Kete Hauora, Ministry of Health. March 2009. Wellington: Institute of Environmental Science and Research.

N Watene et al. *Whakatau Mai ra: The impacts of gambling on Maori communities.—a national maori collaborative approach*. 2007. Wellington: Te Runanga o Kirikiriroa Trust Inc.

NEURO

N Doige. *The brain that changes itself. Stories of personal triumphs from the frontiers of brain science*. 2007 Penguin.

NEW ZEALAND

JD Williams, J Pulford, M Bellringer. Recruiting Gamblers from the General Population for Research Purposes: Outcomes from Two Contrasting Approaches. *International Journal of Mental Health & Addiction* 2009 Online ed.

S Urale director. *Apron Strings*. 2008 DVD.

ONLINE THERAPY

RTA Wood & S Wood. An evaluation of two United Kingdom online support forums designed to help people with gambling issues *Journal of Gambling Issues* Issue 23. Online <http://www.camh.net/egambling/onlinefirst/pdfs/01wood.pdf>

PACIFIC PEOPLES

E Mitchell. Bro' town series 3. Go ask Alice (Episode on gambling) 2006 Firehouse Films Ltd. DVD

RESEARCH

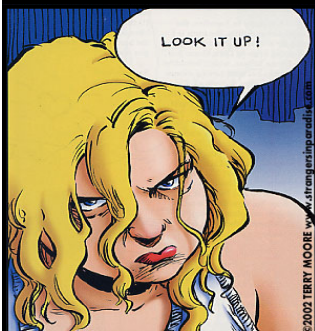
Gambling Research Australia . *A review of Australian gambling research*. Commissioned by gambling Research Australia for the Ministerial Council on Gambling. August 2008.

THERAPY

J Appell & D Kim-Appell. Mindfulness: Implications for substance abuse and addiction. *International Journal of Mental Health & Addiction* 2009 Online ed.

YOUTH

PE Jamieson & D Romer eds. *The changing portrayal of adolescents in the media since 1950*. 2008. Oxford: OUP.



Glenda Northey MLIS, MA (Hons)
Research Librarian
Problem Gambling Foundation of New Zealand
Floor 1, 128 Khyber Pass Road, Grafton.
P.O. Box 8021, Symonds Street,
Auckland
368 1520 x 236
DDI 369 0619
Fax +64 9 368 1540
glenda.northey@pgfnz.org.nz
www.pgfnz.org.nz and www.pgfnz.org.nz/library/